

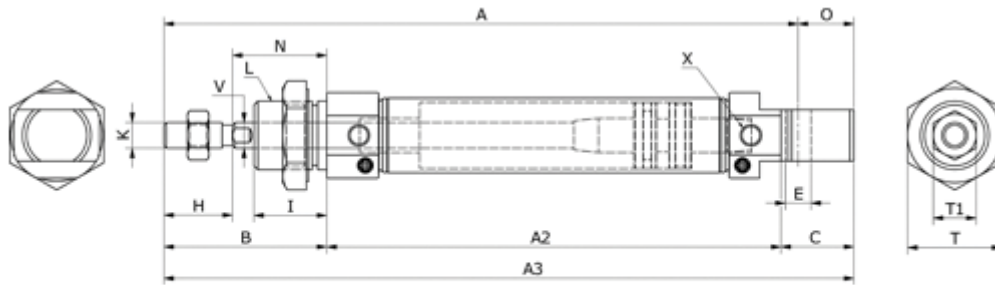
# Data Sheet



Article number: 58MIC25S0025CAG

Description: Cylinder MIC-25x25-S-CA-G, Ø25x25  
Double acting with cushion type - port 1/8"

## Measures



A	= 126	I	= 22	V = 10
A2	= 65	K	= M10x1,25	X = 1/8"
A3	= 137	L	= M22x1,5	
B	= 50	N	= 28	
Bore diameter	= 25	O	= 11	
C	= 22	Stroke	= 25	
E	= 8	T	= 17	
HS	= 22	T1	= 29	